

PIAT FOR

MARSH OAKS

SECTION 11-B

PERFORMANCE DEVELOPMENT

HANNETT TOWNSHIP N.W. HANOVER CO.

NORTH CAROLINA

OWNER/DEVELOPER: BAYSHORE ESTATES, INC.

DATE: APRIL 24, 2006

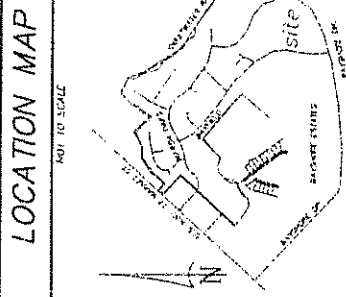
With this recording the Hanover County records the dedication for Public Use of the Bayshore Estates, Inc. Subdivision.

DATE: 05/04/06

CERTIFICATE OF APPROVAL

USE HANOVER COUNTY RECORDS DEPARTMENT

05/04/06



OWNER: BAYSHORE ESTATES, INC.

DESIGNER: MEDICAL DESIGN SERVICES, P.A.

DATE: 4-25-06

CERTIFICATE OF APPROVAL FOR CONSTRUCTION

DATE: 05/04/06

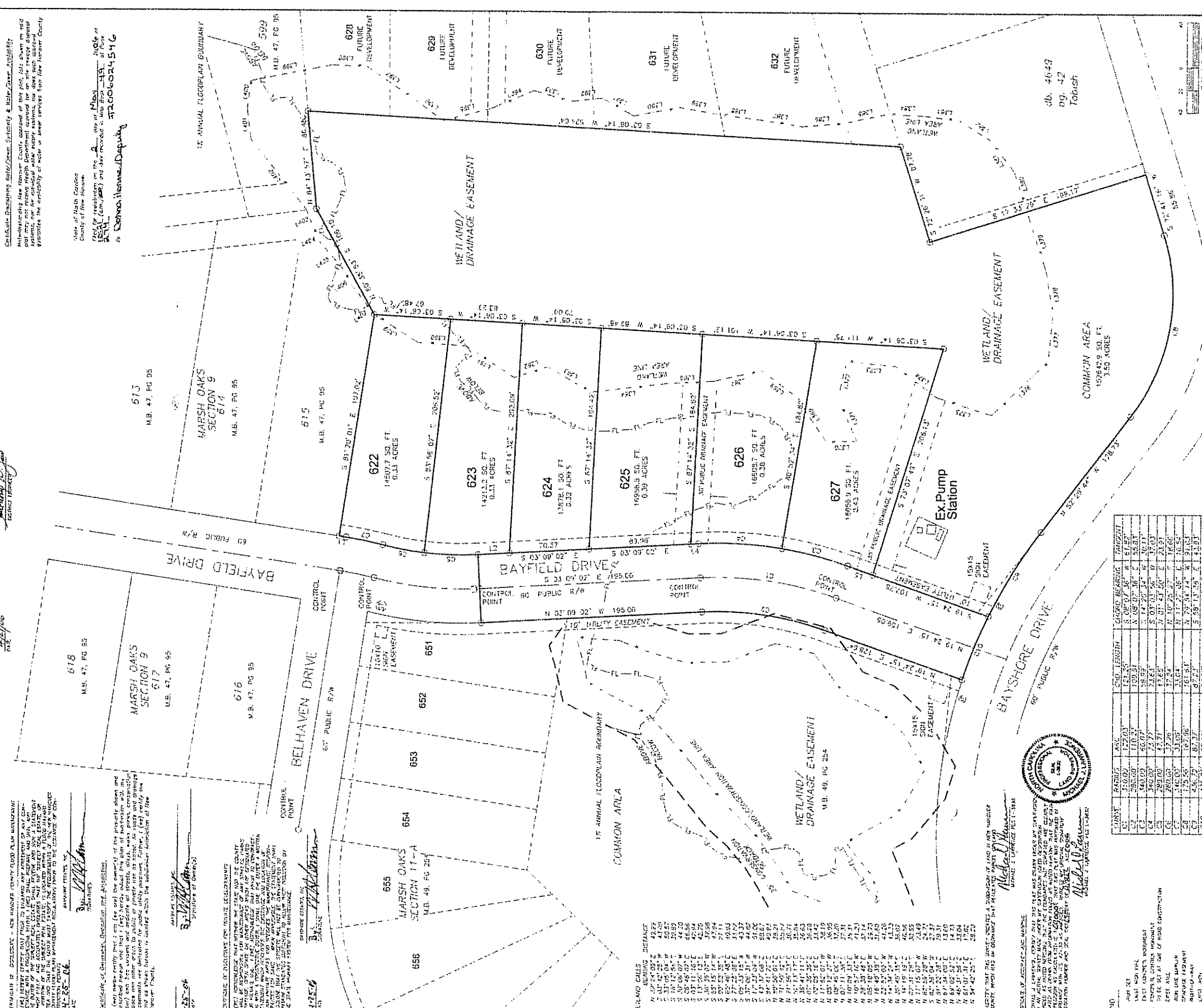
BY: [Signature]

DESIGNER: MEDICAL DESIGN SERVICES, P.A.

DATE: 4-25-06

OWNER: BAYSHORE ESTATES, INC.

DATE: 4-25-06



LINE	BEARING	LENGTH	CHORD BEARING	TANGENT
1	S 89° 07' 36" W	121.23	S 89° 07' 36" W	51.87
2	N 09° 07' 36" E	150.31	N 09° 07' 36" E	55.81
3	S 89° 07' 36" W	58.99	S 89° 07' 36" W	26.11
4	N 09° 07' 36" E	71.63	N 09° 07' 36" E	31.03
5	S 89° 07' 36" W	14.65	S 89° 07' 36" W	6.53
6	N 09° 07' 36" E	17.00	N 09° 07' 36" E	7.60
7	S 89° 07' 36" W	10.24	S 89° 07' 36" W	4.65
8	N 09° 07' 36" E	12.64	N 09° 07' 36" E	5.63
9	S 89° 07' 36" W	6.81	S 89° 07' 36" W	3.13
10	N 09° 07' 36" E	8.07	N 09° 07' 36" E	3.61
11	S 89° 07' 36" W	8.07	S 89° 07' 36" W	3.61
12	N 09° 07' 36" E	12.64	N 09° 07' 36" E	5.63
13	S 89° 07' 36" W	14.65	S 89° 07' 36" W	6.53
14	N 09° 07' 36" E	17.00	N 09° 07' 36" E	7.60
15	S 89° 07' 36" W	10.24	S 89° 07' 36" W	4.65
16	N 09° 07' 36" E	12.64	N 09° 07' 36" E	5.63
17	S 89° 07' 36" W	6.81	S 89° 07' 36" W	3.13
18	N 09° 07' 36" E	8.07	N 09° 07' 36" E	3.61
19	S 89° 07' 36" W	8.07	S 89° 07' 36" W	3.61
20	N 09° 07' 36" E	12.64	N 09° 07' 36" E	5.63
21	S 89° 07' 36" W	14.65	S 89° 07' 36" W	6.53
22	N 09° 07' 36" E	17.00	N 09° 07' 36" E	7.60
23	S 89° 07' 36" W	10.24	S 89° 07' 36" W	4.65
24	N 09° 07' 36" E	12.64	N 09° 07' 36" E	5.63
25	S 89° 07' 36" W	6.81	S 89° 07' 36" W	3.13
26	N 09° 07' 36" E	8.07	N 09° 07' 36" E	3.61
27	S 89° 07' 36" W	8.07	S 89° 07' 36" W	3.61
28	N 09° 07' 36" E	12.64	N 09° 07' 36" E	5.63
29	S 89° 07' 36" W	14.65	S 89° 07' 36" W	6.53
30	N 09° 07' 36" E	17.00	N 09° 07' 36" E	7.60

LINE	BEARING	LENGTH
1	S 89° 07' 36" W	5.26
2	N 09° 07' 36" E	5.26
3	S 89° 07' 36" W	5.26
4	N 09° 07' 36" E	5.26
5	S 89° 07' 36" W	5.26
6	N 09° 07' 36" E	5.26
7	S 89° 07' 36" W	5.26
8	N 09° 07' 36" E	5.26
9	S 89° 07' 36" W	5.26
10	N 09° 07' 36" E	5.26

LEGEND

- 1. 1" = 100'
- 2. 1" = 100'
- 3. 1" = 100'
- 4. 1" = 100'
- 5. 1" = 100'
- 6. 1" = 100'
- 7. 1" = 100'
- 8. 1" = 100'
- 9. 1" = 100'
- 10. 1" = 100'

HANOVER DESIGN SERVICES, P.A.

1 AND SOUVENORS ENGINEERS LAND PLANNERS

319 WALNUT STREET

WILMINGTON, N.C. 28401

PHONE: (910) 343-8002

FAX: (910) 343-9941

170080811-B MAXING

William H. Camerren 7/2-2676